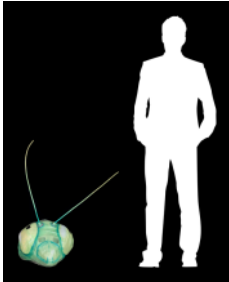




CONDITION REPORT: MTM.2023.0287.0402

REPORT CREATED: 2026-03-14 15:32:54



# TECHNICAL DETAILS

**NAME:** Praying Mantis  
**EVENT:** Cocoon Project  
**REFERENCE:** MTM.2023.0287.0402  
**DATE:** 2023  
**STORAGE REF:** -  
**TPOLOGY:** mask  
**HEIGHT:** 860 mm ( 2'9" in )  
**WIDTH:** 780 mm ( 2'6" in )  
**LENGTH:** 410 mm ( 1'4" in )  
**WEIGHT:** 970 g ( 2.14 lb )

# MATERIALS

body/volume | corrugated cardboard, metal mesh  
details | plastic mesh visor  
paint | acrylic paint

# ARTISTS

**DIRECTION:** Clara Ribeiro  
**ART DIRECTION:** Migvel Tepes  
**CREATION:** Migvel Tepes

# DESCRIPTION

This mask represents a creature known for its dramatic and intimidating appearance.

The construction of the mask involves using a paper-covered cardboard base to create the desired features, exaggerated for the desired theatrical impact, particularly suitable for outdoor shows.

The Mantis character was a human who wanted to be a martial arts fighter. When he transforms, he appears as Mantis, an animal that is an expert fighter in the world of insects, known for their predatory behavior and unique method of hunting. This metaphorical transformation suggests a change in the character's identity.

The interaction between the mask and the actor's body is crucial to achieving the realistic quality of the creature. Based on the principles of physical theater and performance art, the actor's movements must be deliberate and exaggerated in order to animate the mask effectively. This approach underlines the non-verbal communication aspect of the show, as the character's personality and intentions are conveyed primarily through body language and physicality.

The use of additional body extensions, such as insect-like legs, further blurs the line between human and insect. This integration emphasizes the theme of metamorphosis, challenging the audience's

perception of what is human and what is not.

The effectiveness of this mask in a performance context depends heavily on the actor's ability to embody the essence of the creature and manipulate the mask in a way that appears realistic. This requires an in-depth knowledge of the insect's movement patterns and behavior, resulting in a captivating and thought-provoking theatrical experience.

## **CONTEXT**

This project was inspired by Franz Kafka's "Metamorphosis", which explores deep themes of the human condition, desire, and fear through the transformation of the protagonist, Gregor Samsa, into a giant insect.

This was a community project developed with a group of young people, who were led to reflect on the human condition, their desires, and fears. Seven insect characters were created, and each insect represents a different aspect of the human condition, in a metaphor for the various internal and external struggles experienced by individuals in society.

## PROPER CARE - GENERAL CONSIDERATIONS

- Objects must be shielded from direct sunlight at all times to prevent UV damage and fading.
- Maintain a stable environment; avoid exposure to high humidity or rapid moisture fluctuations.
- A strict no-touch policy is in effect for both the public and curatorial staff to prevent oil and acid transfer.
- Authorized handlers must wear appropriate archival gloves whenever contact is necessary.
- Visitors and staff are permitted to take photographs and videos for personal use only.
- The use of flash is strictly prohibited to protect light-sensitive materials.
- No captured imagery may be used to produce saleable goods, such as postcards, books, or merchandise.
- Wheels or casters attached to objects are for on-stage positioning only and are not for general transport.
- Objects must be moved using a secondary dolly or professional equipment rather than their own casters.
- No food, liquids, or smoking are permitted within the immediate vicinity of the objects.
- No cleaning agents, polishes, or dusters should be applied to the objects except by authorized conservation staff.
- Objects must be displayed on stable, level surfaces and secured against accidental tipping or vibration.
- Display areas must be monitored by staff or camera surveillance at all times during public hours.
- Any accidental contact, change in condition, or environmental spike must be reported to the lender within 24 hours.
- Maintain controlled temperatures between 18-22°C to prevent thermal damage to materials.
- Ensure adequate ventilation without direct air currents that could cause dust or environmental fluctuations.
- Conduct regular conservation inspections and document any changes in the condition of objects.
- In case of emergency, follow established evacuation and object protection protocols.